



# OUTDOOR CAMPING

Product Catalog  
2023



Shanghai Remaco Industrial Co.,Ltd





# ABOUT US

Shanghai REMACO Industrial Co., Ltd. is a company that has been manufacturing rooftop tents, 4x4 off-road vehicle accessories, car camping products since year 2014. With 10 years of industry experience, we currently export 20,000 rooftop tents annually. Our rooftop tents have the following features:

- Exclusive molds with proprietary intellectual property patents, allowing customers to avoid competition.
- Can be equipped with solar panels/Andersen plugs/USB & socket charging ports, allowing for internal charging.
- Accept OEM/ODM orders.
- One-year warranty with free replacements for any issues.
- CE certified.

We are continuously optimizing our products with the goal of manufacturing the best value-for-money rooftop tents for our customers. We welcome discussions and have extensive industry experience to assist you in entering the market quickly.





## 01

### Roof Top Tent

Aluminum Roof Top Tent	02-04
Optional Accessories	05
Aluminum Roof Top Tent	06-11
ABS Roof Top Tent	12
Aluminum Roof Top Tent	13
ABS Roof Top Tent	14
Aluminum Roof Top Tent	15-16
Sof Roof Top Tent	18-19

## 02

### Other Car Awning/Tent

270 Awning	21
270 Awning Plus	22
180 Awning	23
Car Side Awning	24
Car Side Awning Annex Room	25
Car Side Shower Tent	26

## 03

### Bell Tent

Bell Tent	28
Optional Accessories	29
Camping Stove	30

## 04

### Car Fridge

Car Fridge	32-33
------------	-------

## 05

### Off-Road Parts

Electric Winch	35-36
Electric Car Inflator	37-38





# HARD SHELL ROOF TOP TENT





# ALUMINUM ROOF TOP TENT

## RCT0101A

### DESCRIPTION

- Tent Color** Black, Gray, Green, Khaki, or Customizable
- Fabric** 280 T/C canvas PU coating, 2000mm waterproof, Anti-UV 50+
- Accessory** 2.3m Telescopic Ladder/LED Light/2 Shoe Bags/Install Tools
- Mattress** 5cm High-density Sponge with Washable Cover

### SELECTIVE COLOR



MODEL NO	Open Size	Package Size	N.W / G.W
RCT0101A-N	211*131*148cm	226*145*24.5cm	65/75kg
RCT0101A-W	211*145*148cm	226*158*24.5cm	75/85kg



2.3m



LED Light



2 Shoe Bags



Install Tools



# ALUMINUM ROOF TOP TENT

## RCT0101B

### DESCRIPTION

- Tent Color** Black, Gray, Green, Khaki, or Customizable
- Fabric** 280 T/C canvas PU coating, 2000mm waterproof, Anti-UV 50+
- Accessory** 2.3m Telescopic Ladder/LED Light/2 Shoe Bags/Install Tools
- Mattress** 5cm High-density Sponge with Washable Cover

### SELECTIVE COLOR



MODEL NO	Open Size	Package Size	N.W / G.W
RCT0101B-N	211*131*148cm	226*145*24.5cm	65/75kg
RCT0101B-W	211*145*148cm	226*158*24.5cm	75/85kg



2.3m



LED Light



2 Shoe Bags



Install Tools



# ALUMINUM ROOF TOP TENT

## RCT0101C

### DESCRIPTION

- Tent Color** Black, Gray, Green, Khaki, or Customizable
- Fabric** 280 T/C canvas PU coating, 2000mm waterproof, Anti-UV 50+
- Accessory** 2.3m Telescopic Ladder/LED Light/2 Shoe Bags/Install Tools
- Mattress** 5cm High-density Sponge with Washable Cover

### SELECTIVE COLOR



MODEL NO	Open Size	Package Size	N.W / G.W
RCT0101C-N	211*131*148cm	226*145*24.5cm	65/75kg
RCT0101C-W	211*145*148cm	226*158*24.5cm	75/85kg



2.3m



LED Light



2 Shoe Bags



Install Tools



# OPTIONAL ACCESSORIES



Stainless Steel Gas Strut



Roof Rack



Flexible Solar Panel



7cm Thickness Mattress



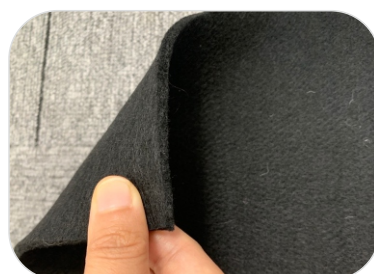
Condensation Mat



Insulation pad



Rechargeable Fan



Foam Blanket



LED strips

# ALUMINUM ROOF TOP TENT

## RCT0101D

### DESCRIPTION

<b>Product Name</b>	Aluminum Roof Top Tent
<b>Color</b>	Black, Gray, Green, Khaki, or Customizable
<b>Fabric</b>	280 T/C Canvas PU coating, 3000mm waterproof, Anti-UV 50+
<b>Accessory</b>	2.3m Telescopic Ladder/LED Light/Shoe Bag/Install Tools
<b>Mattress</b>	6cm High-density Sponge with Washable Cover

### SELECTIVE COLOR



MODEL NO	Open Size	Package Size	N.W / G.W
RCT0101D	210*130*145cm	226*143*27cm	80/110kg



2.3m



LED Light



Sunscreen



Install Tools



# ALUMINUM ROOF TOP TENT

## RCT0101E

### DESCRIPTION

- Tent Color** Black, Gray, Green, Khaki, or Customizable
- Fabric** 280 T/C Canvas PU coating, 3000mm waterproof, Anti-UV 50+
- Accessory** 2.3m Telescopic Ladder/LED Light/2 Shoe Bags/Install Tools
- Mattress** 5cm High-density Sponge with Washable Cover

### SELECTIVE COLOR



MODEL NO	Open Size	Package Size	N.W / G.W
RCT0101E-N	210*132*140cm	218*132*23cm	73/95kg
RCT0101E-W	210*143*140cm	218*150*23cm	78/100kg



2.3m



LED Light



2 Shoe Bags



Install Tools

# ALUMINUM ROOF TOP TENT

## RCT0101F

### DESCRIPTION

- Tent Color** Black, Gray, Green, Khaki, or Customizable
- Fabric** 280 T/C Canvas PU coating, 3000mm waterproof, Anti-UV 50+
- Accessory** 2.3m Telescopic Ladder/LED Light/Install Tools
- Mattress** 6cm High-density Sponge with Washable Cover

### SELECTIVE COLOR



MODEL NO	Open Size	Package Size	N.W / G.W
RCT0101F	215*125*130cm	228*138*33cm	95/110kg



2.3m



LED Light



Sunscreen



Install Tools



# ALUMINUM ROOF TOP TENT

## RCT0101G

### DESCRIPTION

- Product Name** Aluminum Roof Top Tent
- Color** Black, Gray, Green, Khaki, or Customizable
- Fabric** 280 T/C Canvas PU coating, 3000mm waterproof, Anti-UV 50+
- Accessory** 2.3m Telescopic Ladder/Install Tools
- Mattress** 2cm High-density Sponge with Washable Cover

### SELECTIVE COLOR



MODEL NO	Open Size	Package Size	N.W / G.W
RCT0101G	209*142*117cm	223*153*27cm	72/83kg



2.3m



LED Light



Sunscreen



Install Tools

# ALUMINUM ROOF TOP TENT

## RCT0101H

### DESCRIPTION

- Product Name** Aluminum Roof Top Tent
- Color** Black, Gray, Green, Khaki, or Customizable
- Fabric** 280 T/C Canvas PU coating, 3000mm waterproof, Anti-UV 50+
- Accessory** 2.3m Telescopic Ladder/Install Tools
- Mattress** 5cm High-density Sponge with Washable Cover

### SELECTIVE COLOR



MODEL NO	Open Size	Package Size	N.W / G.W
RCT0101H	210*143*163cm	218*150*23cm	80/102kg



2.3m



LED Light



Sunscreen



Install Tools



# ALUMINUM ROOF TOP TENT

## RCT0101Z

### DESCRIPTION

- Product Name** Aluminum Roof Top Tent
- Color** Black, Gray, Green, Khaki, or Customizable
- Fabric** 280 T/C Canvas PU coating, 3000mm waterproof, Anti-UV 50+
- Accessory** 2.3m Telescopic Ladder/Install Tools
- Mattress** 2cm High-density Sponge with Washable Cover

### SELECTIVE COLOR



MODEL NO	Open Size	Package Size	N.W / G.W
RCT0101Z	210*143*163cm	197*137*23cm	45/63kg



2.3m



LED Light



2 Shoe Bags



Install Tools

# HARD SHELL ROOF TOP TENT

## RCT0102

### DESCRIPTION

- Tent Color** Black, Gray, Green, Khaki, or Customizable
- Fabric** 280 T/C Canvas PU coating, 3000mm waterproof, Anti-UV 50+
- Accessory** 2.3m Telescopic Ladder/LED Light/2 Shoe Bags/Install Tools
- Mattress** 5cm High-density Sponge with Washable Cover
- Shell Material** ABS

### SELECTIVE COLOR



MODEL NO	Open Size	Package Size	N.W / G.W
RCT0102-N	188*130*105cm	197*137*23cm	45/63kg
RCT0102-W	216*130*105cm	222*139*35cm	65/79kg



2.3m



LED Light



2 Shoe Bags



Install Tools

# ALUMINUM ROOF TOP TENT

## RCT0102A

### DESCRIPTION

- Tent Color** Black, Gray, Green, Khaki, or Customizable
- Fabric** 280 T/C Canvas PU coating, 3000mm waterproof, Anti-UV 50+
- Accessory** 2.3m Telescopic Ladder/LED Light/2 Shoe Bags/Install Tools
- Mattress** 5cm High-density Sponge with Washable Cover
- Shell Material** Aluminum

### SELECTIVE COLOR



MODEL NO	Open Size	Package Size	N.W / G.W
RCT0102A	219×137×95cm	226×145×23cm	66/80kg



2.3m



LED Light



2 Shoe Bags



Install Tools



# SIDE OPENING ABS ROOF TOP TENT

## RCT0105

### DESCRIPTION

- Tent Color** Black, Gray, Green, Khaki, or Customizable
- Fabric** 280 T/C Canvas PU coating, 3000mm waterproof, Anti-UV 50+
- Accessory** 2.3m Telescopic Ladder/Install Tools
- Mattress** 5cm High-density Sponge with Washable Cover

### SELECTIVE COLOR



MODEL NO	Open Size	Package Size	N.W / G.W
RCT0105-N	160*210*125cm	173*134*35cm	65/78kg
RCT0105-W	210*210*125cm	225*135*35cm	83/98kg



2.3m



Install Tools



Sunscreen



Waterproof

# SIDE OPENING ALUMINUM ROOF TOP TENT

## RCT0105B

### DESCRIPTION

- Product Name** Hard Shell Roof Top Tent
- Color** Black, Gray, Green, Khaki, or Customizable
- Fabric** 280 T/C Canvas PU coating, 3000mm waterproof, Anti-UV 50+
- Accessory** 2.3m Telescopic Ladder/Install Tools
- Mattress** 2cm High-density Sponge with Washable Cover

### SELECTIVE COLOR



MODEL NO	Open Size	Package Size	N.W / G.W
RCT0105B-S	204*150*120cm	158*135*32cm	78/94kg
RCT0105B-M	208*180*120cm	188*134*32cm	88/104kg



2.3m



Install Tools



Sunscreen



Waterproof

# SIDE OPENING ALUMINUM ROOF TOP TENT

## RCT0105C

### DESCRIPTION

- Product Name** Hard Shell Roof Top Tent
- Color** Black, Gray, Green, Khaki, or Customizable
- Fabric** 280 T/C Canvas PU coating, 3000mm waterproof, Anti-UV 50+
- Accessory** 2.3m Telescopic Ladder/Install Tools
- Mattress** 2cm High-density Sponge with Washable Cover

### SELECTIVE COLOR



MODEL NO	Open Size	Package Size	N.W / G.W
RCT0105C-S	129*110*108cm	139*119*21cm	41/47kg
RCT0105C-M	149*110*108cm	159*120*23cm	51/57kg



2.3m



Install Tools



Sunscreen



Waterproof



# SOFT ROOF TOP TENT





# SOFT ROOF TOP TENT

## RCT0103

### DESCRIPTION

- Tent Color** Black, Gray, Green, Khaki, or Customizable
- Fabric** 300 T/C Canvas PU coating, 3000mm waterproof, Anti-UV 50+
- Accessory** 2.3m Telescopic Ladder/Install Tools
- Mattress** 5cm High-density Sponge with Washable Cover

### SELECTIVE COLOR



MODEL NO	Open Size	Package Size	N.W / G.W
RCT0103-A	143x240x126cm	145*125*30cm	48/52kg
RCT0103-B	163x240x126cm	165*125*30cm	52/56kg
RCT0103-C	193x240x126cm	195*125*30cm	60/64kg



2.3m



Install Tools



Sunscreen



Waterproof

# SOFT ROOF TOP TENT

## RCT0104

### DESCRIPTION

- Tent Color** Black, Gray, Green, Khaki, or Customizable
- Fabric** 300 T/C Canvas PU coating, 3000mm waterproof, Anti-UV 50+
- Accessory** 2.3m Telescopic Ladder/Install Tools
- Mattress** 5cm High-density Sponge with Washable Cover

### SELECTIVE COLOR



MODEL NO	Open Size	Package Size	N.W / G.W
RCT0104-A	143x310x126cm	145*125*30cm	53/57kg
RCT0104-B	163x310x126cm	165*125*30cm	58/62kg
RCT0104-C	193x310x126cm	195*125*30cm	68/72kg



2.3m



Install Tools



Sunscreen



Waterproof



# OTHER CAR AWNING



# 270 AWNING

## RCT0107

### DESCRIPTION

- Product Name** 270 Awning
- Color** Black, Khaki, Gray
- Fabric** 600D Oxford PU coating, 2000mm waterproof
- Accessory** Aluminum Pole and 4 standing leg
- Mattress** Aluminum Alloy

### SELECTIVE COLOR



MODEL NO	Open Size	Package Size	N.W / G.W
RCT0107-A	Radius: 200cm	208*20*20cm	21/24kg
RCT0107-B	Radius: 250cm	268*20*20cm	25/27kg



Sunscreen



Waterproof



UV protection



Convenient

# 360 AWNING

## RCT0108

### DESCRIPTION

- Product Name** 270 Awning Plus
- Color** Black, Khaki, Gray
- Fabric** 600D Oxford PU coating, 2000mm waterproof
- Accessory** Aluminum Pole and 4 standing leg
- Connector** Aluminum Alloy

### SELECTIVE COLOR



MODEL NO	Open Size	Package Size	N.W / G.W
RCT0108-A	Radius: 200cm	212*23*20cm	23/27kg
RCT0108-B	Radius: 250cm	268*23*20cm	27/30kg



Sunscreen



Waterproof



UV protection



Convenient



# 180 AWNING

## RCT0109

### DESCRIPTION

- Product Name** 180 Awning
- Color** Black, Khaki, Gray
- Fabric** 600D Oxford PU coating, 2000mm waterproof
- Accessory** Aluminum Pole and 2 standing leg
- Connector** Aluminum Alloy

### SELECTIVE COLOR



MODEL NO	Open Size	Package Size	N.W / G.W
RCT0109-A	Radius: 200cm	208*20*20cm	20/23kg
RCT0109-B	Radius: 250cm	268*20*20cm	23/26kg

-   
 Sunscreen
-   
 Waterproof
-   
 UV protection
-   
 Convenient

# CAR SIDE AWNING

## RCT0106

### DESCRIPTION

<b>Tent Color</b>	Gray, Khaki, or custom
<b>Fabric</b>	420D Oxford PU coating, 3000mm waterproof
<b>Frame</b>	Aluminum Pole and 2 stand leg
<b>Connector</b>	Aluminum Alloy

### SELECTIVE COLOR



MODEL NO	Open Size	Package Size	N.W / G.W
RCT0106-A	1.5X2.6M	165*12*11cm	8.2/9kg
RCT0106-B	2X2M	215*12*11cm	9.2/10kg
RCT0106-C	2X2.5M	215*12*11cm	9.4/10.35kg
RCT0106-D	2X3M	215*13*11cm	9.6/10.7kg
RCT0106-E	2.5X2.5M	260*13*12cm	10.2/11.3kg
RCT0106-F	2.5X3M	260*13*12cm	12.8/13.5kg



Sunscreen



Waterproof



UV protection



Convenient

# CAR SIDE AWNING ANNEX ROOM

## RCT0118

### DESCRIPTION

- Tent Color** Gray, Khaki, or custom
- Fabric** 420D Oxford PU coating, 3000mm waterproof
- Frame** Aluminum Pole
- Floor** 550G PVC

### SELECTIVE COLOR



MODEL NO	Open Size	Package Size	N.W / G.W
RCT0118-A	150X200X200cm	30*30*50cm	4.5/4.9kg
RCT0118-B	200X200X200cm	30*30*50cm	4.7/5.1kg
RCT0118-C	200X250X200cm	30*30*50cm	5.5/6kg
RCT0118-D	200X300X200cm	30*30*50cm	6.5/7kg
RCT0118-E	250X250X200cm	30*30*50cm	6.5/7kg
RCT0118-F	250X200X200cm	30*30*50cm	7.5/8kg



Sunscreen



Waterproof



UV protection



Convenient



# CAR SIDE SHOWER TENT

## RCT0117

### DESCRIPTION

- Tent Color** Gray, Khaki, or custom
- Fabric** 420D oxford ripstop waterproof and UV protection +silver lining
- Cover** 650G PVC waterproof with UV protection cover
- Frame** Aluminum Pole
- Connector** Aluminum Alloy

### SELECTIVE COLOR



MODEL NO	Open Size	Package Size	N.W / G.W
RCT0117	105x105x160/210cm	108*12*15cm	5.5/6kg



Sunscreen



Waterproof



UV protection



Convenient



# BELL TENT





# BELL TENT

## RCT0201

### DESCRIPTION

<b>Color</b>	Beige, Khaki
<b>Fabric</b>	285GSM cotton canvas fabric with 3000mm rainproof treated on the surface / 900D oxford cloth, PU5000mm
<b>Base Fabric</b>	540GSM PVC floor / 540gPVC, flame retardant, Pu5000mm
<b>Support rod</b>	Φ38mm main rod, Φ19mm gate rod
<b>Wind rope</b>	Φ6mm thick nylon rope
<b>Nails</b>	Φ6mm*25cm Wind rope iron nails, 20cm long floor iron nails

### SELECTIVE FABRIC

OXFORD

COTTON



MODEL NO	Open Size	Package Size	N.W / G.W
RCT0201-A	300*300*200cm	112*25*25cm	18/20kg
RCT0201-B	400*400*250cm	100*29*29cm	26/28kg
RCT0201-C	500*500*300cm	112*33*33cm	36/38kg
RCT0201-D	600*600*350cm	132*34*34cm	47/49kg
RCT0201-E	700*700*350cm	120*39*39cm	60/62kg



Sunscreen



Waterproof



flame retardant



Convenient



# OPTIONAL ACCESSORIES



Bell Tent Protector Cover



Bell Tent Polypropylene Matting



Bell Tent Footprint Mat

# CAMPING STOVE

## RCO0801

### DESCRIPTION

Color	Silver, Black
Material	Stainless Steel, Titanium steel, Glass
Chimney	4pc * 32cm, 1pc 22cm

### SELECTIVE COLOR



MODEL NO	Open Size	Package Size	N.W / G.W
RCO0801	53*40*38cm	43*27*29.5cm	7/8.2kg



# CAR FRIDGE





# CAR FRIDGE

## W SERIES

### DESCRIPTION

<b>Product Name</b>	Multi-directional Car Fridge
<b>Temperature Range</b>	-20°C ~ 20°C
<b>Input Voltage</b>	DC 12V/24V
<b>Material</b>	HDPE, PP
<b>System</b>	Fast-acting and efficient compressor
<b>Insulation</b>	High quality full foam insulation of polyurethane, CFC-free
<b>Certificates</b>	CE/EMC, RoHS, LFGB, PAHS, FCC, REACH



MODEL NO	Capacity/L	Power/W	Open Size (cm)	Package Size (cm)	N.W / G.W (kg)	Zone
RCW0101	18	55	61.6*34*33.8	64.8*41.6*43	12.7/14.5	Single
RCW0102	25	55	61.6*34*40.3	64.8*41.6*49.5	13.5/15.3	Single
RCW0103	40	60	67*40.6*44.5	70*49*50.4	15.5/17.7	Single
RCW0104	50	60	67*40.6*50.7	70*49*56.7	15.8/18.5	Single
RCW0105	60	60	67*40.6*57	70*49*63.2	16.8/19.7	Single
RCW0101D	35	55	67*40.6*44	70*49*50.4	15.7/19	Dual
RCW0102D	45	60	67*40.6*50.7	70*49*56.7	16.4/20	Dual
RCW0103D	55	60	67*40.6*57.2	70*49*63.2	17.4/21.4	Dual

# CAR FRIDGE

## Q SERIES

### DESCRIPTION

<b>Product Name</b>	Car Fridge
<b>Temperature Range</b>	-22°C ~ 20°C
<b>Input Voltage</b>	DC 12V/24V
<b>Material</b>	PP, ABS, PCM PLATE, Aluminum
<b>System</b>	Fast-acting and efficient compressor
<b>Insulation</b>	High quality full foam insulation of polyurethane, CFC-free
<b>Certificates</b>	CE/EMC, RoHS, LFGB, PAHS, FCC, REACH



MODEL NO	Capacity/L	Power/W	Open Size (cm)	Package Size (cm)	N.W / G.W (kg)	Zone
RCQ0101	17	36	61*32*27.5	65.5*38.5*35.5	10.7/12.4	Single
RCQ0102	20	40	61*32*32.5	65.5*38.5*40.5	11.5/13.2	Single
RCQ0103	27	45	61*32*39	65.5*38.5*46	12/15	Single
RCQ0104	28.5	45	74.2*36*34	75.5*42.5*40.5	14.7/16.8	Single
RCQ0105	38	48	74.2*36*40.5	75.5*42.5*47	15.3/17.5	Single
RCQ0106	50	50	74.2*36*49.5	75.5*42.5*56	16/19.5	Single
RCQ0107	60	55	74.2*36*59	75.5*42.5*65	17.6/20.5	Single



# OFF-ROAD PARTS





# ELECTRIC WINCH

## RCW0102

### DESCRIPTION

<b>Product Name</b>	12000LB(5448kg) Single-line Electric Winch
<b>Motor</b>	6.5hp/4.8kw 12V, Series Wound
<b>Gear Train</b>	3-stage planetary
<b>Gear Reduction Ratio</b>	265:1
<b>Cable</b>	( $\phi$ 9.1mm $\times$ 24m)
<b>Drum Size</b>	$\phi$ 2.51" $\times$ 8.82" ( $\phi$ 64mm $\times$ 224mm)
<b>Fairlead</b>	4-way roller fairlead / Aluminum
<b>Remote Control</b>	Included



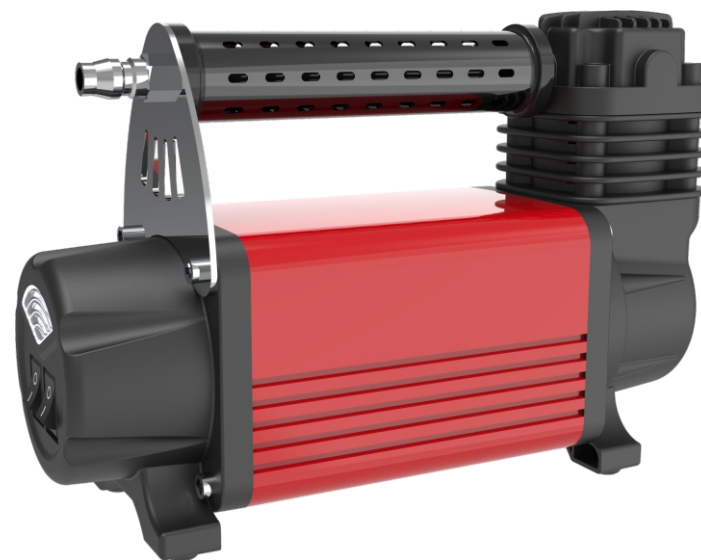
MODEL NO	Load Capacity	Rope	Size (cm)	Package Size (cm)	G.W (kg)
REW0102	12000LB	Steel/Nylon	54.6 $\times$ 16 $\times$ 22.2	60 $\times$ 24 $\times$ 36	36/26

# ELECTRIC CAR TIRE INFLATOR

## RCA0101

### DESCRIPTION

Product Name	30mm Electric Car Tire Inflator
Cylinder Diameter	Single 30mm / Dual 30mm
Power Cord	3m Power Cord with Crocodile Clips
Connector	5m PU Hose with Quick Connector
Inflator nozzle	3pcs Nozzle Adaptors
Certificate	CE



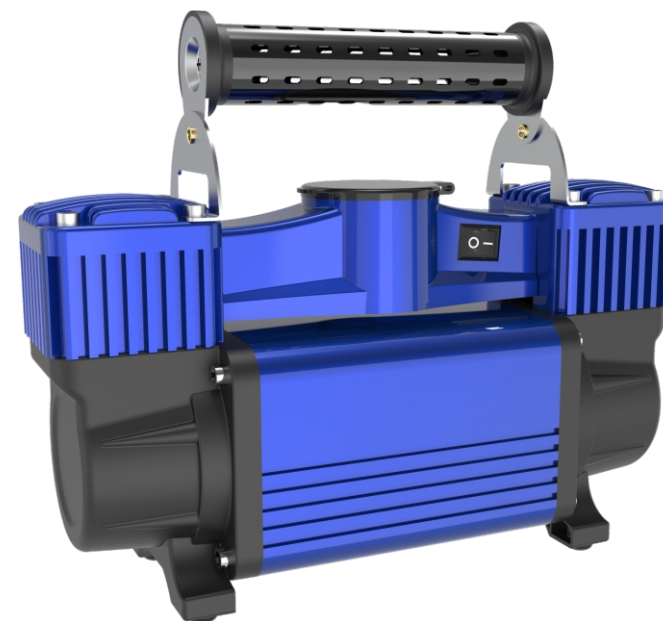
MODEL NO	Air Flow (L/min)	Max Current	Air Pressure	Voltage	Size (cm)	G.W (kg)
RCA0101A	50	25A	150 PSI	DC 12V	25*10*17	1.5
RCA0101B	80	30A	150 PSI	DC 12V	25*10*20	2.5

# ELECTRIC CAR TIRE INFLATOR

## RCA0101

### DESCRIPTION

<b>Product Name</b>	60mm Electric Car Tire Inflator
<b>Cylinder Diameter</b>	Single 60mm / Dual 60mm
<b>Power Cord</b>	2.5m Power Cord with Crocodile Clips
<b>Connector</b>	7m Air Hose with Quick Connector Built-in Thermal Protection
<b>Inflator nozzle</b>	3pcs Nozzle Adaptors
<b>Certificate</b>	CE



MODEL NO	Air Flow (L/min)	Max Current	Air Pressure	Voltage	Size (cm)	G.W (kg)
RCA0101C	160	45A	150 PSI	DC 12V	30*41*30.5	8.5
RCA0101D	300	90A	150 PSI	DC 12V	38.6*28.5*27.6	10.5



# ELECTRIC WINCH

## REW0101

### DESCRIPTION

Product Name	9500LB(4510kg) Single-line Electric Winch
Motor	5.5hp/4kw 12V, Series Wound
Gear Train	3-stage planetary
Gear Reduction Ratio	265:1
Cable	( $\phi$ 8.5mm $\times$ 24m)
Drum Size	$\phi$ 2.51" $\times$ 8.82" ( $\phi$ 64mm $\times$ 224mm)
Fairlead	4-way roller fairlead / Aluminum
Remote Control	Included



MODEL NO	Load Capacity	Rope	Size (cm)	Package Size (cm)	G.W (kg)
RCW0101	9500LB	Steel/Nylon	54.6 $\times$ 16 $\times$ 22.2	60 $\times$ 24 $\times$ 36	35/24



## **Shanghai Remaco Industrial Co.,Ltd**

📍 Room 908 & 909 North Building, No.1839 Qixin Road, Minhang District, 201101 Shanghai

✉ info@shremaco.com

☎ +86-21-37668099

🌐 [www.shremaco.com](http://www.shremaco.com)